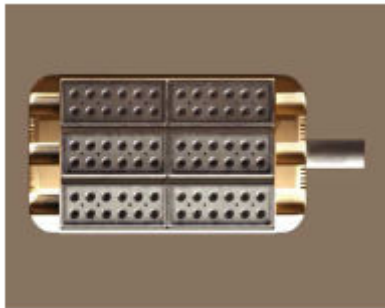


LED Lighting saves energy, protects the environment, reduces maintenance fees and provides a better light quality for improved visibility and safety.

STL72



80/100W

STL108



120/150W

STL36



40W/50W

Features and Benefits

Brighter and **more efficient** than normal street light due to high power LED

Over **5 times longer** lifetime than standard metal and mercury light

Highly energy saving. – **saving more than 60%** compared to existing street light

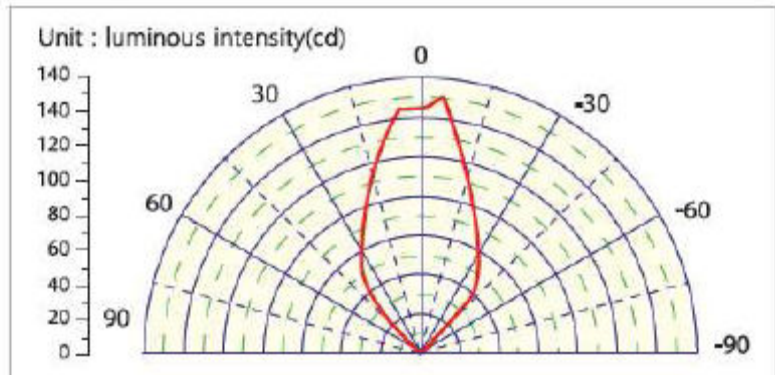
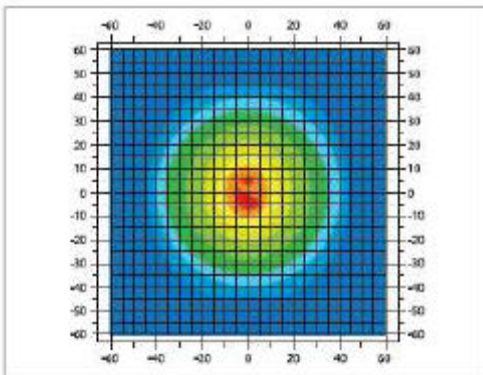
Eco friendly product (**low outbreak of waste, CO2 and no mercury or lead**)

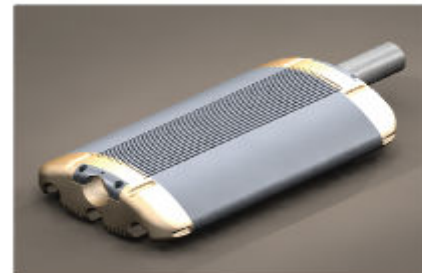
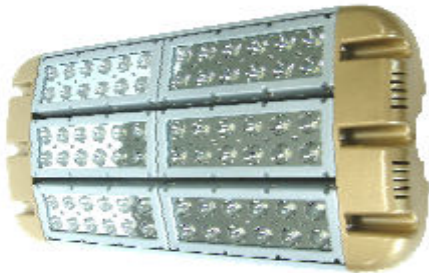
Controllable beam **angle (90-160°)**

Able to express much **more vivid natural colours** (over Ra 80), and can be adapted to various uses by having various colour temperature.

Virtually maintenance free, **less traffic disruption.**

STL72 distribution curve of luminous intensity





Specification

MODEL	UNIT	STL36		STL72		STL108	
Power Consumption (P)	W	40	50	80	100	120	150
Input Power (V-in)	VDC	42					
Luminous Flux (F)(Max)	Lm	3,600	4,500	7,600	9,500	12,000	15,000
Efficiency of Luminance (Max)	Lm/W	90		95		100	
Size	mm	320 x 278 x102		522 x 276 x102		727 x 276 x102	
Beam Angle (2 θ 1/2)	°	90 - 160					
Colour Temperature (CCT)	K	2,600 – 7,000					
Colour Rendering(CRI)	RA	75 (Cool) – 80 (Warm)					
LED Life Time	Hrs	50,000					
Operational Temperature(OPT)	°C	-25 – 50C					
Protection index		IP 66					
Housing Material		Aluminium, Tempered Glass, Waterproof-silicon Epoxy					
Housing Colour		1 colour, 2 tone (silver & Gold)					
Weight	Kg	4.9		7.3		9.7	
1Replaceable Lamp		M-H 100W		M-H 250W		M-H 400W	